

**LINVISIBILE®**



Linvisibile

Infinito External Sliding door

**TECHNICAL DATA  
AND ASSEMBLY INSTRUCTION**

---

# TECHNICAL SPECIFICATION

---

**LINVISIBLE MAREA EXTERNAL SLIDING DOOR SYSTEM INFINITO VERSION** is the exclusive system equipped with a guide for the sliding movement of doors and leaves, made of:

**Guide support frame** in wood and extruded aluminum alloy EN AW 6060 (Anticorodal 063) which guarantees perfect anchoring of the aluminum to the false ceiling and makes it paintable with good quality water-based paints, enamels, etc .. Available in a wide range of size. The high solidity of the guide support frame prevents even the slightest bending, preserving it from the risk of unpleasant cracking and detachment of the plaster and / or the finish of the false ceiling.

**High performing removable sliding guide** with high flow rates.

**Panel**, 50 mm thick, consisting of an internal structure of honeycomb panels and a perimetric frame made of natural chemical oxidized extruded aluminum applied along the perimeter of the panel with a fixing system with square angles. Customizable finishes for the decorative surfaces and the perimetric aluminium frame. The perimetric frame is available in 7 colours, and the decorative surfaces can be made in different finishes as glass, ceramic, laminate, micro-cement, etc..of thickness 3-4 mm.

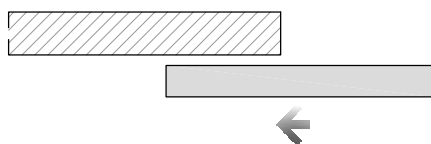
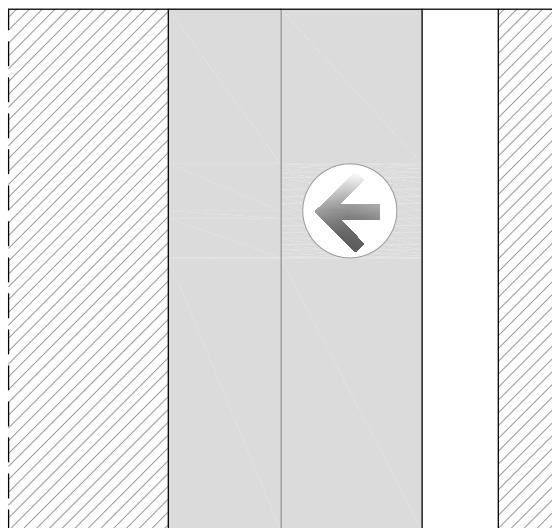
Lower **directional system** to keep the door centre line aligned when the leaf slides, which guarantees high panel stability and avoids sideways 'oscillation' when the panel moves.

---

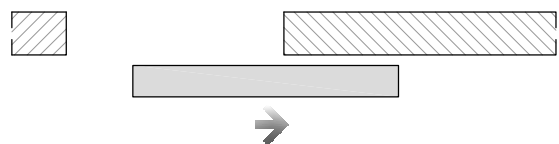
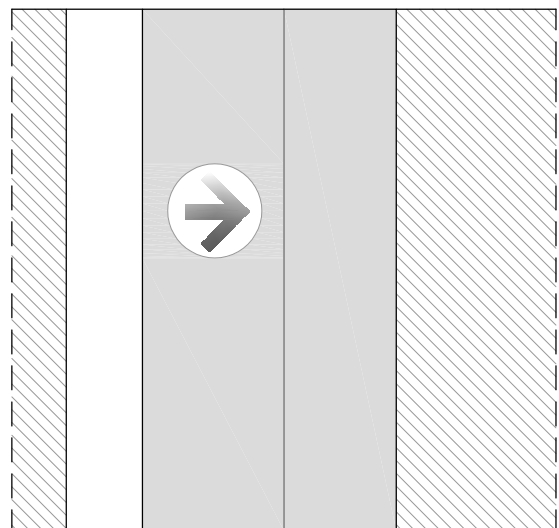
## OPENING TYPES

---

OPENING TO THE LEFT

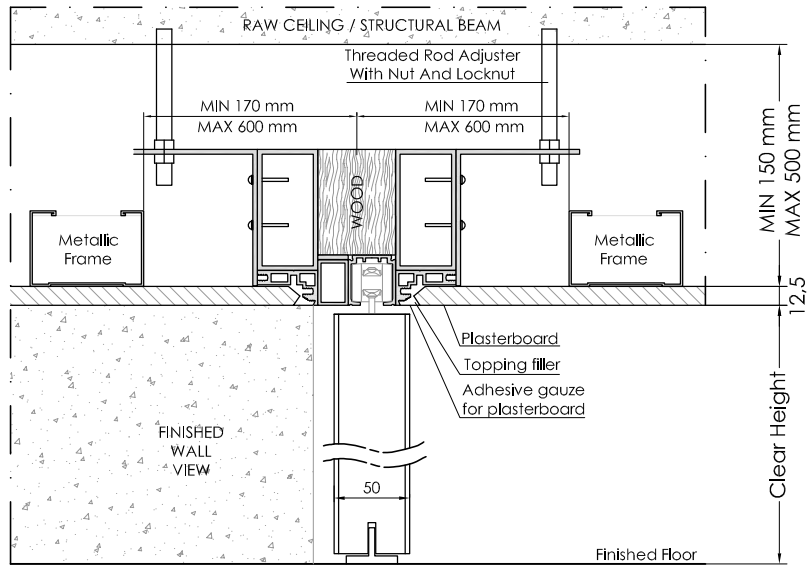


OPENING TO THE RIGHT



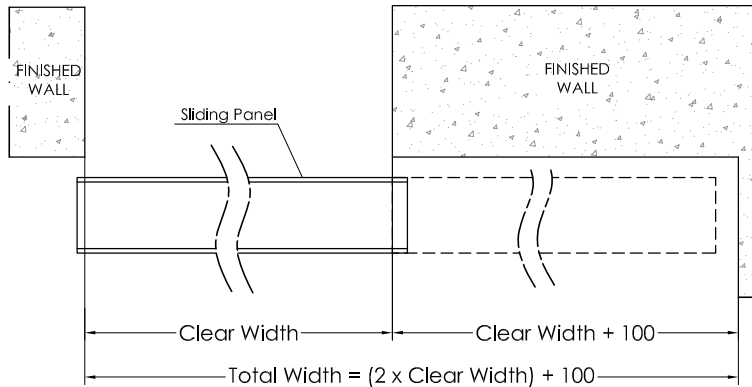
# APPLICATION WITH LATERAL WALL

**VERTICAL SECTION**  
**AT THE CLEAR WIDTH**  
 (EXAMPLE OPENING TO THE RIGHT)  
 SCALE 1:5

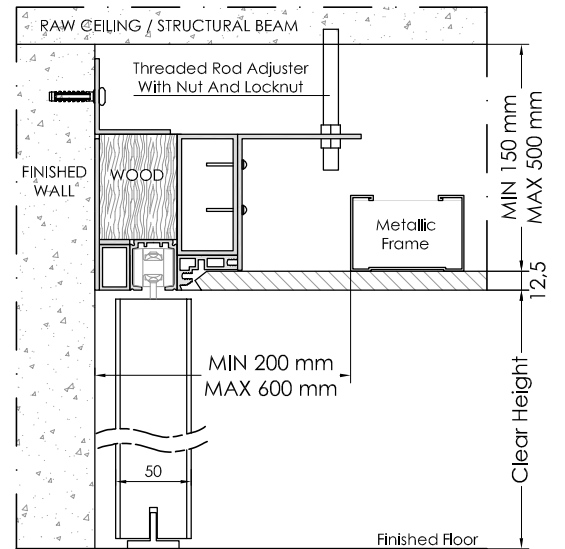


## EXAMPLE OF CLOSING CONTINUOUSLY TO THE WALL

**HORIZONTAL SECTION**  
**OPENING TOWARD RIGHT**

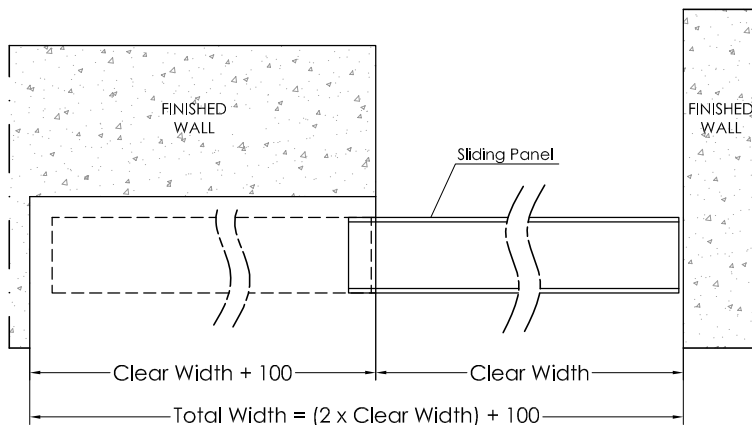


**VERTICAL SECTION**

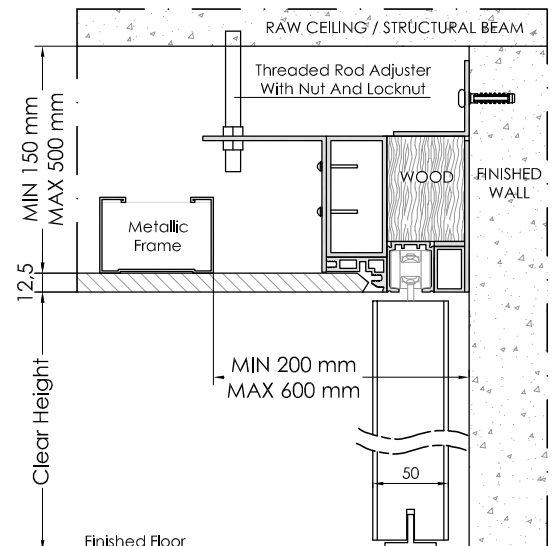


## EXAMPLE OF PERPENDICULAR CLOSING TO THE WALL

**HORIZONTAL SECTION**  
**OPENING TOWARD LEFT**



**VERTICAL SECTION**



---

These documents are the property of Portarredo s.r.l. and are protected by Italian as well as international laws, treaties and agreements on intellectual property. They may not be copied, reproduced, translated or transcribed in any form whatsoever, in whole or in part, without the prior written authorisation of Portarredo s.r.l.

Maximum attention has been paid to these documents before printing. However, because of continuous technological development and since we are constantly engaged in the development and improvement of our product range, we reserve the right to modify specifications of any product without prior notice.

