

LINVISIBILE®

---

We  
introduce  
you

WINTER 2017

---



# What we do

**Our Business model is engineered to provide unique products working on the site.**

**At LINVISIBLE this means that we are focused on offering you:**

---

Real support in the designing of a highly customized product

---

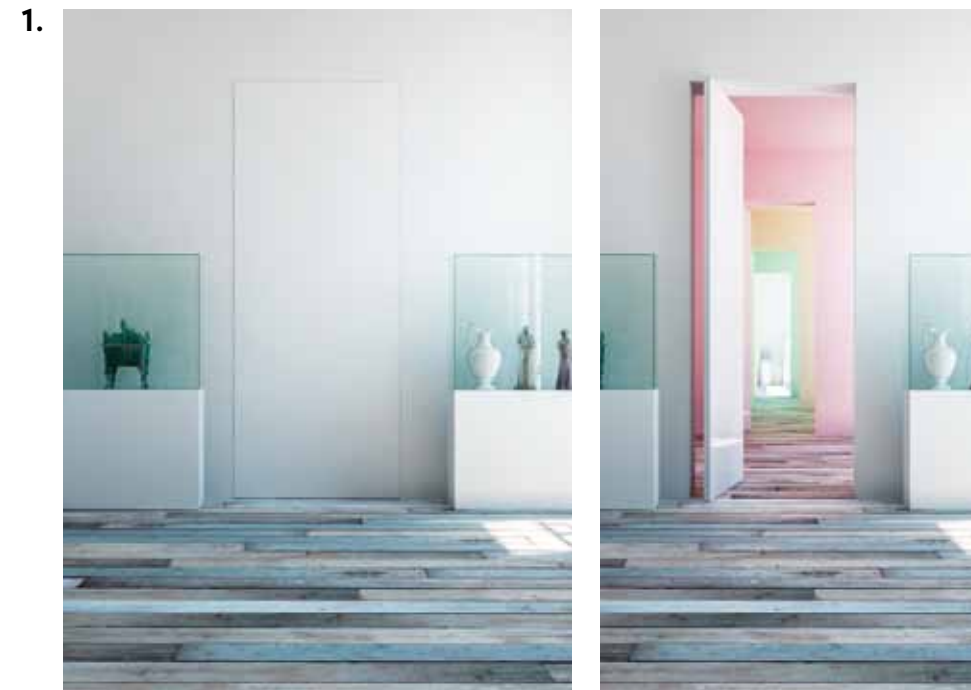
Manufacturing activities with an extraordinary experience and competences capable to deliver highly reliable pieces

---

Delivery to the building site in any destination

---

Installation service, at LINVISIBLE we care about “making it happen”



*Our product range:*

**1. BREZZA** | Filo 10 Vertical Pivot door, Vertical Pivot door.

---

**2. MAREA** | Concealed Sliding door either manual or motorized version, Altopiano and Marechiaro Sliding Systems, Pocket door for 105, 125, 150 mm wall thickness, and Glass panel version.

---

**3. ALBA** | Hinged door 50 mm traditional panel thickness, Filo 10 version, Infinito version, Fire Resistant EI30 version and Curved leaf version.

---

**4. ORIZZONTE** | Boiserie system and Skirting system.

---

**5. TECHNICAL CLOSURES** | Extra Closures, Nicchio and Special Closures.







**BREZZA** | FILO 10 VERTICAL PIVOT DOOR | Orsoni Venezia 1888 mosaics coating

LINVISIBLE



# Our mission

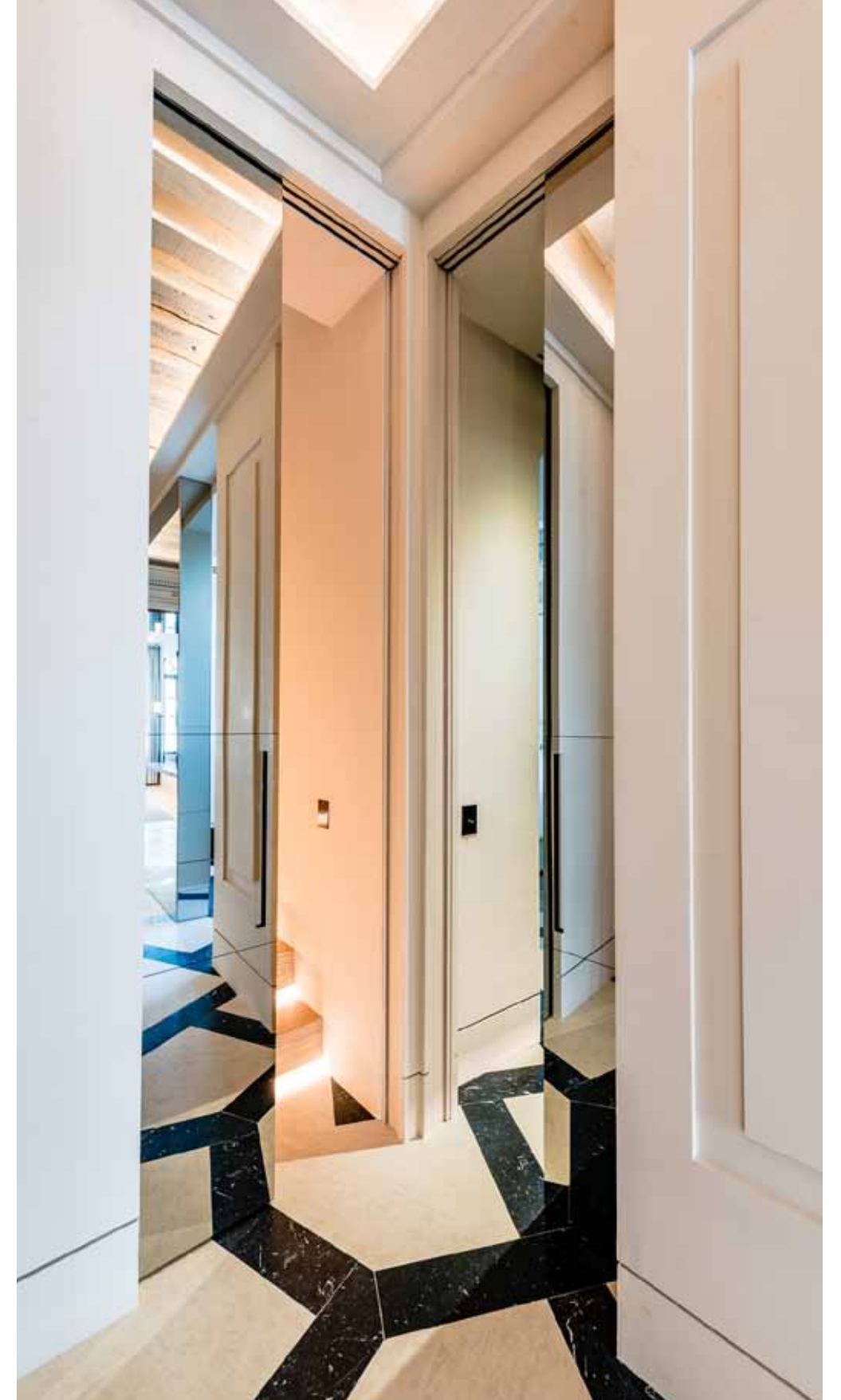
## LINVISIBLE

More than meets the eye

Behind our work there's a hidden Italian story of experience and exclusive design. The precise technical know-how is masked by the apparent simplicity of the flush-to-wall door that, combined with a maximum level of "customization", allows fulfilling the most demanding aesthetic desires and functional expectations.



MAREA | POCKET DOOR | Recessed handle | MiraStar® Glass (Saint-Gobain) coating





MAREA | POCKET DOOR | Glass version | dark glass finish

LINVISIBLE



---

# Designing

MAREA | CONCEALED SLIDING DOOR | Manual version | Palissandro Santos wood finish | Boiserie system in continuity with the wall | recessed handle

**Creating something unique needs a 4 hands effort.**

At LINVISIBLE we're enthusiastic to give all the support in terms of technical background, experience and tools aimed to provide best possible solution.

**100% Made in Italy** products with high quality and exceptional results, we offer an exclusive 10-year warranty on our aluminium frames and a 2-year warranty for all our panels.





**TECHNICAL CLOSURES** | EXTRA CLOSURES | Veneer wood finish | invisible flush fitting handle  
**ALBA** | HINGED DOOR | full height version | veneer wood finish

LINVISIBLE



# In service

LINVISIBLE offers you highly qualified, start-to-finish installation services. We'll leave you only the pleasure and freedom of enjoying a unique and incomparable door.

Our widespread and well-organized network of specialized teams of installers is available countrywide; their experience and professionalism are at your service to guarantee that our products are aesthetically pleasing, functional and highly durable.



**ORIZZONTE** | Black shark leather finish  
Boiserie and skirting systems in continuity with the wall





# LINVISIBILE

Design and manufacture of  
interior doors and closure  
systems and spaces coating



FSC® certified products  
available on request



LINVISIBILE products can contribute  
to meet the building construction LEED®  
rating system requirements



**LINVISIBILE BY PORTARREDO SRL**  
via C. Besana, 1 - 44011 Argenta (Fe) - Italy  
+39.0532.800960 - info@linvisibile.it

These documents are the exclusive property of PORTARREDO S.R.L. and are protected by Italian law as well as by international laws, treaties and agreements on intellectual property. They may not be copied, reproduced, translated or transcribed in any form in whole or in part, without the prior written authorization of PORTARREDO S.R.L. The utmost attention has been paid to these documents before printing. However, because of continuous technological development and since we are constantly engaged in the development and improvement of our product range, we reserve the right to modify specifications of any product without prior notice.